

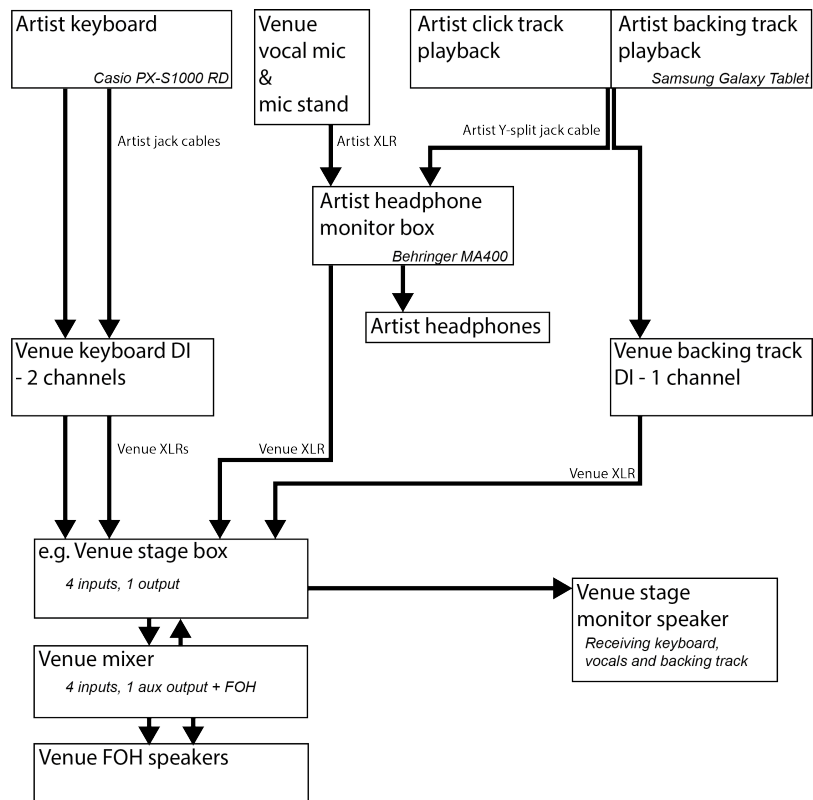
**Solo Performance**

**TECH RIDER**

ARTIST	VENUE
Electronic piano (Casio PX-S1000 RD), if the venue not possess a tuned acoustic piano	One dynamic vocal microphone
Four jack to jack cables (L/R)	One mic stand
Keyboard stand and piano stool	Four XLR cables
Samsung Galaxy Tablet	Stage monitor speaker
One XLR cable	All front-of-house sound reinforcement: connections from stage to FOH position, mixing desk with 4 free input channels, FOH speakers
One headphone monitor box (Behringer MA400)	3 power points at the artist's position (for electronic piano, tablet and headphone box)
One set of headphones	

If the venue is unable to provide any of the equipment above, please contact the artist so that alternative arrangements can be made.

The artist will require a minimum of 30 minutes for set-up and soundcheck.



**SOFIA EDEVANE**  
www.sofiaedevane.co.uk  
sofiaedevane@gmail.com  
+44 (0)7549364054

## **HOSPITALITY REQUIREMENTS**

- Non-carbonated water at room temperature
- Adequate security to ensure the safety of the artist and her belongings for the entire stay at the venue
- Dietary requirements: pescatarian